

# ABMS-8 Battery Management System

The ABMS-8 Battery Management System is a state-of-the-art, fully integrated, automatic aircraft battery servicing solution. The system provides automatic control of up to 8 RF80-K Charger/Analyzers on a single PC, monitors all critical battery servicing data, displays this information in real time, stores servicing results in a structured database, includes work-order tracking and provides several reports to manage battery servicing operations. The ABMS-8 Battery Management Software is designed to interface with the AB3000 Controller and is compatible with Windows 2000, XP and NT Operating Systems, US English version. The system is expandable up to 32 battery servicing stations (based on 1 PC per 8 stations).



## Key Features:

### New for ABMS-8

- Remote PC Control of up to 8 RF80-Ks with Expanded Functionality and Accuracy
- Supports Constant Current, 2-Step CC, Constant Potential and Reflex Charge Modes
- Dynamic Battery Icon displays the battery servicing task at each station
- Log Playback Mode allows Playback and Analysis of Battery Processing
- Real-Time Battery Performance Graphs of Discharge Capacity and Charge Cycle
- Audible AB3000 and PC Alerts at End-of-Task and for Cell Warning Conditions
- Battery Amp Hours are Calculated and Displayed in Real Time
- Battery Temperature Alarms in Charge and Discharge (with MA3000TS)
- Built-In Calibration Utility
- Optional MA24D Cell Clip-Off Module
- Custom Battery Hoods for most Boeing and Airbus Aircraft

### General Features

- Battery Processing Recipes provide Automated Processing
- Compatible with Existing and Emerging Aircraft Battery Chemistries
- Automatic Processing and Monitoring Increases Battery Shop Productivity
- Expandable up to 32 Battery Servicing Stations (Based on 1 PC per 8 stations)
- User-Friendly Serial Interface
- Color Display of Real-Time Battery Servicing Data
- Accurate Monitoring of Cell/Battery Voltage, Current and Temperature
- Battery Management Reports can be Viewed, Printed or Exported
- Complete Traceability to Satisfy Regulatory Authorities
- Designed to Conform to Battery Manufacturer's Servicing Guidelines (CMMs)
- Work Order Form Records Initial/Final Inspection, Servicing Results and Water Usage
- Cell Voltage Alert Conditions are Reported, Displayed and Recorded

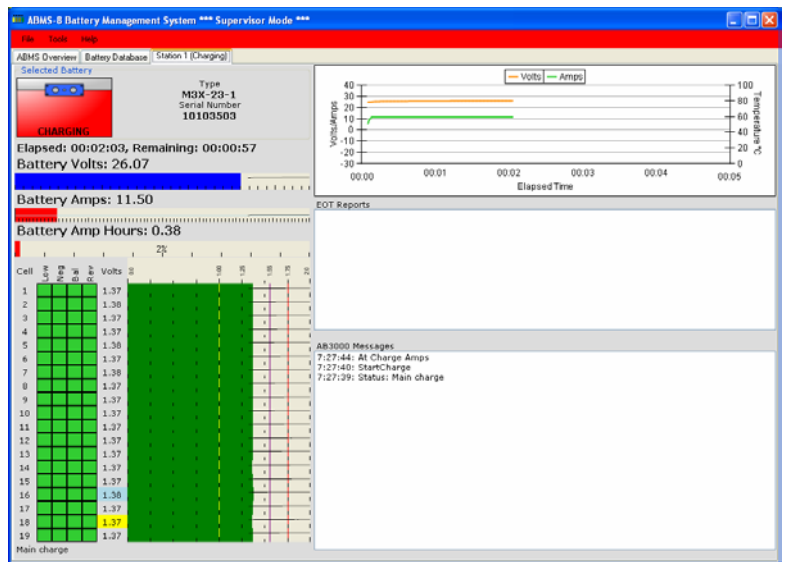
## National Stock Number (NSN) Assignments:

6140-01-534-9333	AB3000 Controller
7030-01-534-9334	ABMS-4 Battery Management Software
Pending	ABMS-8 Battery Management Software
6140-01-534-9335	AB175 Harness & Stand Assembly



# ABMS-8 Battery Management System

## Primary Screens:

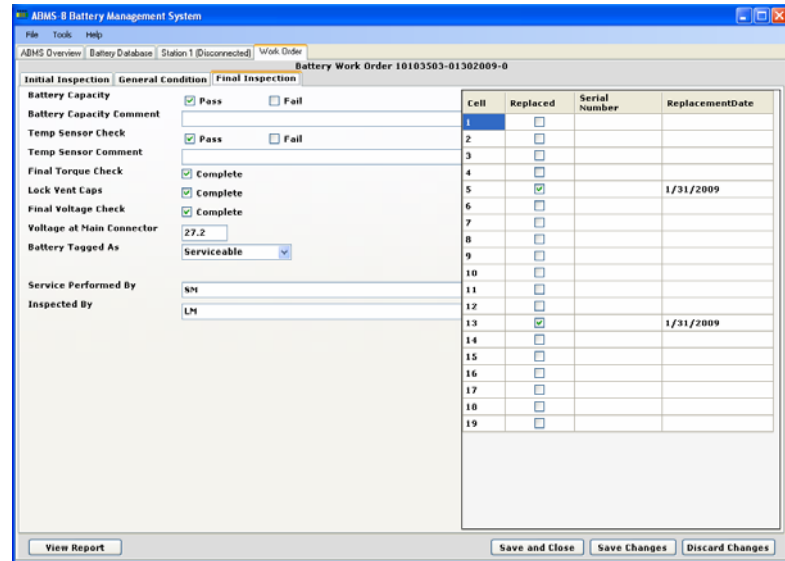
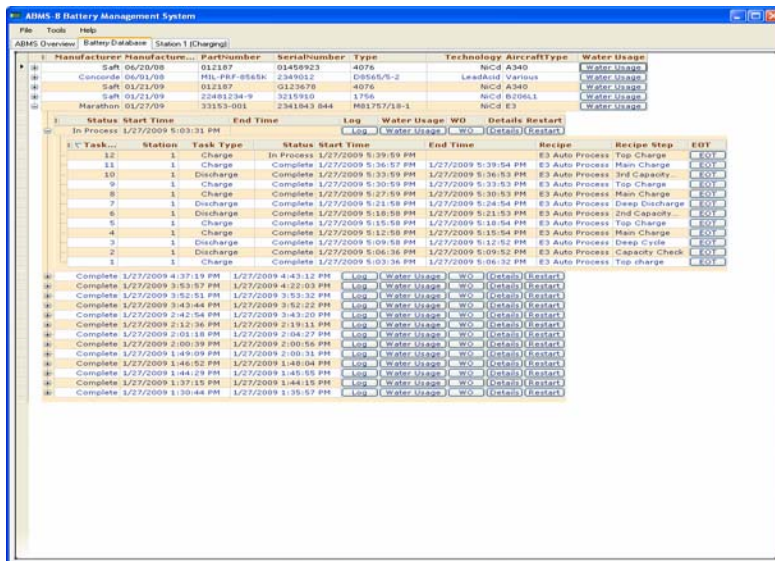


### ABMS Overview Tab

This is the starting point for all battery servicing activities. From this screen, batteries are entered in the database, assigned to the appropriate station number and automatic battery processing is initiated.

### Service Station Tab

The Station Tab displays detailed battery servicing information on a specific station including battery type, serial number, total battery voltage, charge/discharge current, individual cell voltages, elapsed time, remaining time, battery amp hours, cell warnings, AB3000 messages and real-time graphing.



### Battery Database Tab

The Battery Database Tab contains details on all batteries serviced by the system and all servicing results. There are three levels of data available; the Top Level shows each battery in the database, the Job Level provides report access and other utilities, and the Task Level lists all tasks (charge or discharge) performed within a Job.

### Battery Work Order Form (one of three screens)

Each battery serviced is assigned a Work Order which contains Initial Inspection Data, Battery Servicing Results, Water Usage Details and Final Inspection Information. A report can then be printed containing all battery servicing results.

Marvel Aero International, Inc.  
 20381 Lake Forest Drive, Suite B3, Lake Forest, CA 92630 USA  
 Tel: +1 949 829-8264 Fax: +1 949 829-8394 CAGE: 1WKR4  
 Copyright 2004-2009, All Rights Reserved  
[www.marvelaero.com](http://www.marvelaero.com) [www.christiecbcs.com](http://www.christiecbcs.com)

