

# ABMS-10X Battery Management System



The New ABMS-10X Battery Management System provides PC control of up to 10 Christie RF80-M Charger/Analyzers on a single PC. Featuring individual cell scanning & diagnostics, battery temperature monitoring and expanded battery processing capability, this user-friendly system represents the latest evolution of our popular ABMS product series.

## Key Features:

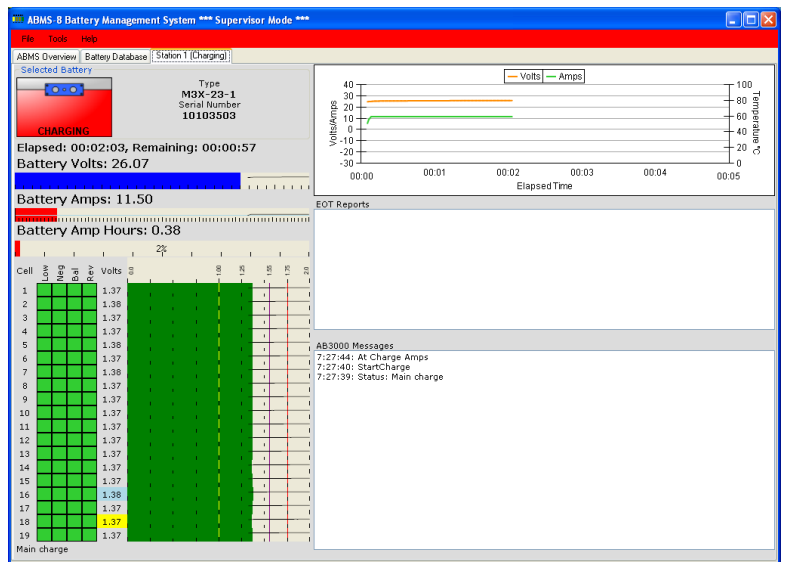
- Remote PC Control of up to 10 RF80-M
- User Control directly from RF80-M Touch Screen Display
- Expanded Battery Processing Capability (advanced recipe engine)
- Easy set-up with RF80-M Rear Panel Connections
- Compatible with Windows 7
- Optional MA24DX Cell Clip-Off Module for Automatic Deep Discharge capability
- Supports Constant Current, 2-Step CC, Constant Potential and Reflex Charge Modes
- Dynamic Battery Icon displays the battery servicing task at each station
- Log Playback Mode allows Playback and Analysis of Battery Processing
- Real-Time Battery Performance Graphs of Discharge Capacity and Charge Cycle
- Audible Alerts at End-of-Task and for Cell Warning Conditions
- Battery Amp Hours are Calculated and Displayed in Real Time
- Battery Temperature Alarms in Charge and Discharge (with MA3000TS)
- Built-In Calibration Utility
- Custom Battery Hoods for most Boeing and Airbus Aircraft
- Compatible with Nickel-Cadmium and Lead-Acid Battery Chemistries
- User-Friendly Serial Interface
- Color Display of Real-Time Battery Servicing Data
- Accurate Monitoring of Cell/Battery Voltage, Current and Temperature
- Battery Management Reports can be Viewed, Printed or Exported
- Complete Traceability to Satisfy Regulatory Authorities
- Designed to Conform to Battery Manufacturer's Servicing Guidelines (CMMs)
- Work Order Form Records Initial/Final Inspection, Servicing Results and Water Usage
- Cell Voltage Alert Conditions are Reported, Displayed and Recorded

Marvel Aero International, Inc.  
21 Rancho Circle, Lake Forest, CA 92630 USA  
Tel: +1 949 829-8264 Fax: +1 949 829-8394 CAGE: 1WKR4  
Copyright 2004-2009, All Rights Reserved  
[www.marvelaero.com](http://www.marvelaero.com) [www.christiecb.com](http://www.christiecb.com)



# ABMS-10X Battery Management System

## Primary Screens:

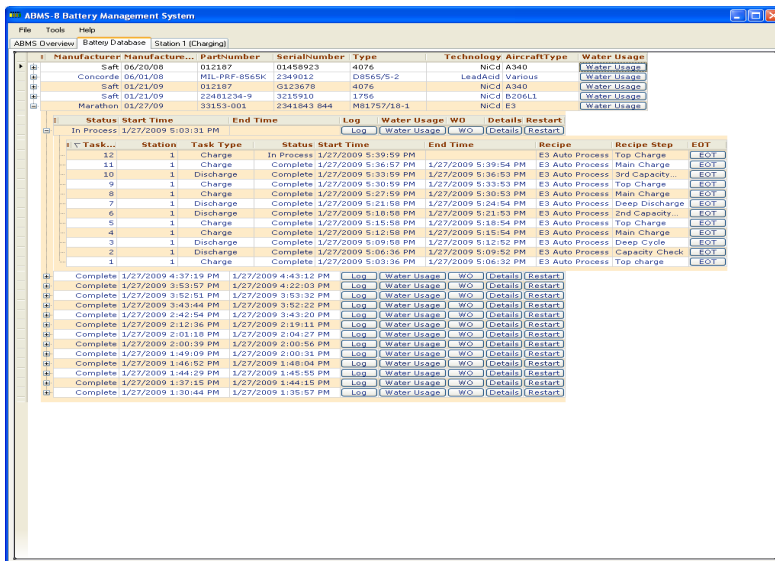


### ABMS Overview Tab

Displays status of all RF80-Ms connected to the system. New batteries are entered in the database, records reviewed/printed and system preferences set.

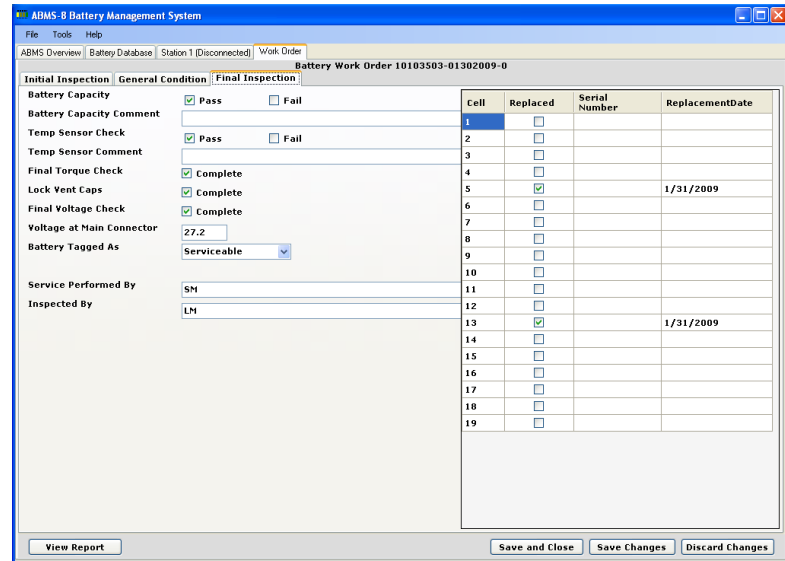
### Service Station Tab

The Station Tab displays detailed battery servicing information on a specific station including battery type, serial number, total battery voltage, charge/discharge current, individual cell voltages, elapsed time, remaining time, battery amp hours, cell warnings, processing messages and real-time graphing.



### Battery Database Tab

The Battery Database Tab contains details on all batteries serviced by the system and all servicing results. There are three levels of data available; the Top Level shows each battery in the database, the Job Level provides report access and other utilities, and the Task Level lists all tasks (charge or discharge) performed within a Job.



### Battery Work Order Form (one of three screens)

Each battery serviced is assigned a Work Order which contains Initial Inspection Data, Battery Servicing Results, Water Usage Details and Final Inspection Information. A report can then be printed containing all battery servicing results.

Marvel Aero International, Inc.  
 21 Rancho Circle, Lake Forest, CA 92630 USA  
 Tel: +1 949 829-8264 Fax: +1 949 829-8394 CAGE: 1WKR4  
 Copyright 2012, All Rights Reserved  
[www.marvelaero.com](http://www.marvelaero.com) [www.christiecbcs.com](http://www.christiecbcs.com)

