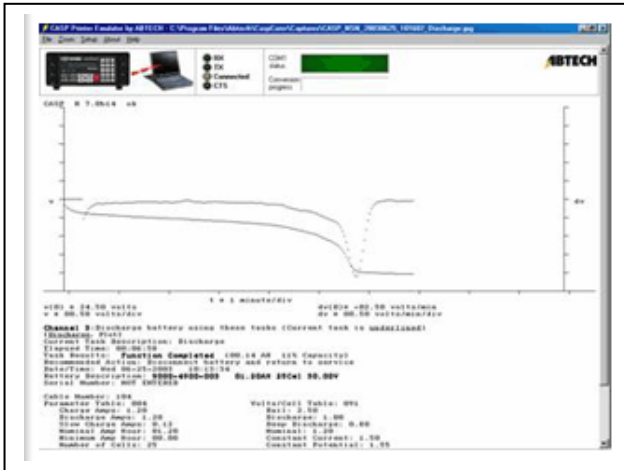


# AB910E CASP Printer Emulator



Marvel Aero International, Inc.  
20381 Lake Forest Drive, Suite B3  
Lake Forest, CA 92630 USA  
Tel (949 ) 829-8264, Fax (949) 829-8394  
[www.marvelaero.com](http://www.marvelaero.com)  
[info@marvelaero.com](mailto:info@marvelaero.com)  
CAGE: 1WKR4

The AB910E CASP Printer Emulator Software Program will automatically capture your CASP printouts instead of using a special dot matrix serial printer. The printouts are converted to JPEG files which can be viewed, saved, printed or e-mailed as attachments. Up to 8 CASP units may be connected to a single PC (one serial port is needed for each CASP). As the CASP generates consecutive printouts during a battery servicing function, each printout will be automatically saved in the "Captures" folder. If desired, any file can be loaded, and then saved under a different file name created by the user.

System Requirements: A PC with at least one serial (com) port, running Windows 2000, XP, Vista, Win 7. A 25-pin male to 9-pin female RS-232 serial cable is required to connect your CASP to the PC.

The following CASP models and firmware are supported:

CASP/2000L, H and HM version 5.0  
CASP/2000L, H and HM version 6.1  
CASP/2500H version 7.0

Additional features of this application include:

- Automatic filing system records battery serial number (if entered) and task code (charge or discharge).
- Printing can be accomplished from the file menu including charge/discharge plots and table dumps.
- Text Capture of the charge/discharge plot information is available (file, view text capture) and a text editor allows the user to enter custom information.
- Com port number is displayed on the main screen for applications where multiple CASP units are being operated on the same PC.
- History function allows you to page forward and backward to view all completed charge/discharge plot within a service session.
- The file name being currently viewed is shown on the top of the application window.

## Items Included with AB910E:

Installation CD, 1 each  
RS-232 Cable (for connection between CASP and serial port), 1 each  
Operator's Instructions, 1 each

## Also available, P/N MA910-4 Kit Including:

Installation CD, 1 each  
RS-232 Cable (for connection between CASP and serial port), 4 each  
4-Port USB-Serial Adapter, 1 each  
Operator's Instructions, 1 each

